

# SOPHOS



## sophos **mobile security**

FOR WINDOWS MOBILE

### Administrator guide

Sophos Mobile Security, version 1.0

Windows Mobile 5

Document date: February 2007





# Contents

- 1 Who should read this guide? .....4
- 2 Installing the Sophos Mobile Security administrator toolkit .....5
- 3 Creating configuration files .....8
- 4 Deploying Sophos Mobile Security.....12
- Technical support.....15

# 1 Who should read this guide?

This guide is for system administrators who are responsible for the following activities:

- Installing the Sophos Mobile Security administrator toolkit
- Configuring and deploying the Sophos Mobile Security device software

This guide is a companion to the *Sophos Mobile Security startup guide*, which is for users installing Sophos Mobile Security on their devices.

## 2 Installing the Sophos Mobile Security administrator toolkit

The Sophos Mobile Security administrator toolkit consists of the following components.

---

### Sophos Mobile Security Configuration Tool

The Configuration Tool enables you to create configuration files to set and lock Sophos Mobile Security configuration settings on Windows Mobile 5.0 devices.

---

### Sophos Mobile Security Deployment Tool

The Deployment Tool enables you to install Sophos Mobile Security on Windows Mobile 5.0 devices using ActiveSync 4.1 or later.

If you plan to have users install Sophos Mobile Security on their own devices, you can distribute the Deployment Tool to them.

---

### Sophos Mobile Security CAB installation file

The CAB installation file installs Sophos Mobile Security when it is opened on a Windows Mobile 5.0 device.

You can use deployment software such as Nokia's Intellisync Device Management to deploy the CAB installation file to your devices.

### 2.1 Before you install

Read the Sophos Mobile Security release notes, which contain important information about Sophos Mobile Security.

## 2.2 System requirements

You can install the Sophos Mobile Security administrator toolkit on an administrator's computer or a computer that hosts deployment software.

To install the administrator toolkit, the computer must meet the following requirements.

Component	Requirement
Disk space	5 MB free disk space
Windows 2000 Professional/Server	SP4
Windows XP Professional	SP2
Windows 2003 Server	R2

---

To install the administrator toolkit:

1. Visit the Sophos Mobile Security download web page. The address is in the email sent to you by Sophos.
2. Download the Sophos Mobile Security administrator toolkit installer `sam10sfx.exe`.
3. Open `sam10sfx.exe` and complete the InstallShield Wizard.

---

To remove the administrator toolkit:

1. Click **Start**, click **Control Panel**, and then double-click **Add or Remove Programs**.
2. Click **Change or Remove Programs**.
4. Click **Sophos Mobile Security for Windows Mobile**, and then click **Remove**.

To remove the Deployment Tool:

1. Click **Start**, click **Control Panel**, and then double-click **Add or Remove Programs**.
2. Click **Change or Remove Programs**.
3. Click **Sophos Mobile Security Deployment Tool**, and then click **Remove**.

If you have not used the Deployment Tool (see [section 4.2](#)), it will not be displayed in **Add or Remove Programs**.

## 3 Creating configuration files

Configuration files enable you to enforce a consistent policy across your mobile devices by **configuring** Sophos Mobile Security settings. You can also **lock** the settings if you want to prevent your users from changing them.

You use the Configuration Tool to create a configuration file, which you then deploy to devices together with the installation file (see [section 4.1](#)). When Sophos Mobile Security is installed on the device, it uses the settings in the configuration file.

---

To start the Configuration Tool:

- ¶ Click **Start**, click **Programs**, click **Sophos**, click **Sophos Mobile Security**, and then click **Configuration Tool**.

---

To view the Configuration Tool help:

- ¶ Click **Start**, click **Programs**, click **Sophos**, click **Sophos Mobile Security**, and then click **Configuration Tool Help**.

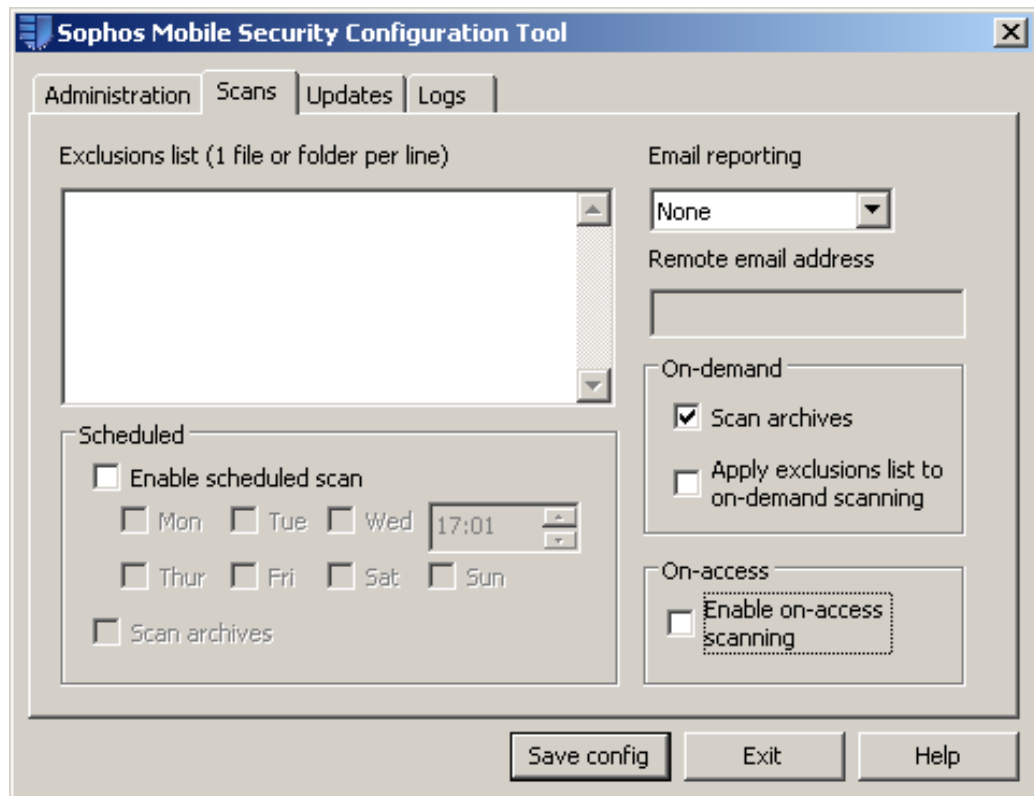
- or -

- ¶ From the Configuration Tool, click **Help**.

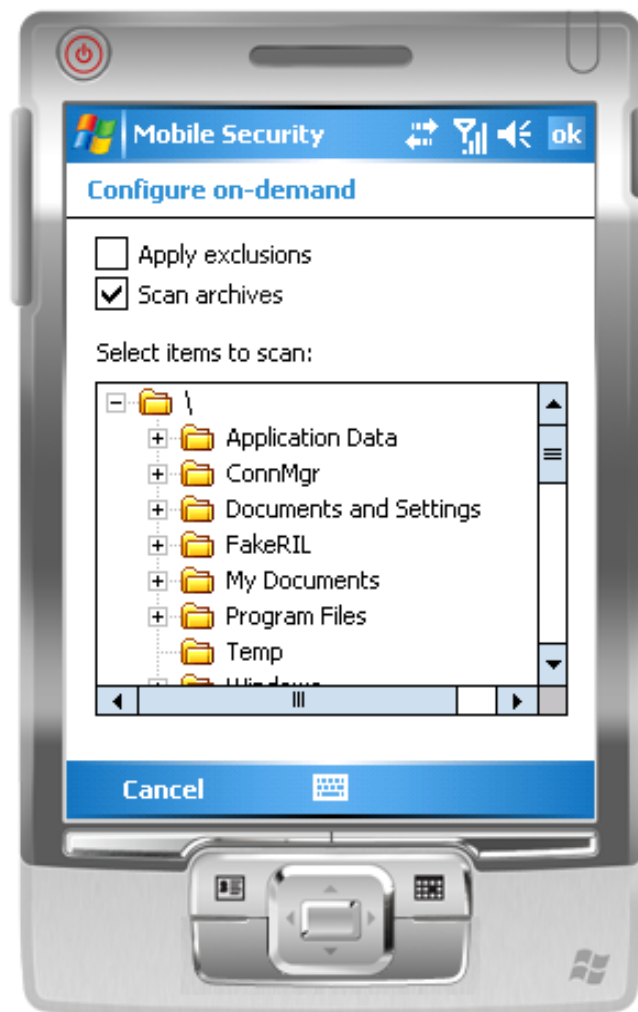
To configure Sophos Mobile Security settings:

1. Start the Configuration Tool.
2. Configure the settings as you wish them to operate on the device.

For example, you can configure the following settings for on-demand scanning:



On the device, these settings will appear as follows:



For information on the settings, view the Configuration Tool help.

- ❗ To download regular updates and keep protection updated on your devices, you now need to configure updating:
3. Click the **Updates** tab, then enter the user name and password supplied by Sophos.
  4. Click **Save config**.
  5. Deploy the configuration file (see [section 4.1](#)).

---

To lock the Sophos Mobile Security settings:

1. Start the Configuration Tool.
2. Click the **Administration** tab.
3. Select the **Prevent device user configuration** check box.
4. Click **Save config**.
5. Deploy the configuration file (see [section 4.1](#)).

## 4 Deploying Sophos Mobile Security

### System requirements

To deploy Sophos Mobile Security to a device, it must meet the following requirements.

Component	Requirement
Permanent storage	5 MB free storage space
Operating system	Windows Mobile 5.0 Pocket PC Edition
	Windows Mobile 5.0 Pocket PC Phone Edition

- ❗ Sophos Mobile Security does not support Windows Mobile 5.0 Smartphone Edition.

### 4.1 Deploy the configuration file to your devices

- ❗ If you have created a configuration file, you will need to deploy it yourself to your devices before installing Sophos Mobile Security. The configuration file is not deployed automatically to devices by the Deployment Tool.

You can either use deployment software such as Nokia's Intellisync Device Management to deploy the configuration file to your devices, or you can copy the configuration file to your devices using ActiveSync.

---

To copy the configuration file to a device using ActiveSync:

1. Use Windows Explorer to navigate to the configuration file `MobileSecurity.cfg` on your computer. The default location of this file on your computer is `drive\Program Files\Sophos\Sophos Mobile Security`.
2. Right-click `MobileSecurity.cfg` and then click **Copy**.
3. Connect the device to your computer using ActiveSync.
4. Click **Explore**.

5. Double-click **My Windows Mobile-Based Device**.
6. Right-click in the **My Windows Mobile-Based Device** window and then click **Paste**.

## 4.2 Install Sophos Mobile Security using the Deployment Tool

The Deployment Tool enables you to install Sophos Mobile Security on devices using ActiveSync 4.1 or later.

This method is recommended if you need to deploy Sophos Mobile Security to a small number of devices (for example, 10 or less).

---

To install Sophos Mobile Security to devices using the Deployment Tool:

1. Connect the first device to your computer using ActiveSync.
2. Deploy the configuration file.
3. Click **Start**, click **Programs**, click **Sophos**, click **Sophos Mobile Security**, and then click **Deployment Tool**.  
Sophos Mobile Security installs on the first device.
4. Connect the second device to your computer using ActiveSync.
5. Deploy the configuration file.
6. Click **Start**, click **Programs**, click **Sophos**, click **Sophos Mobile Security**, and then click **Install Mobile Security to your device**.  
Sophos Mobile Security installs on the second device.
7. Repeat steps 4-6 for subsequent devices.

## 4.3 Deploy Sophos Mobile Security using third-party deployment software

You can use deployment software such as Nokia's Intellisync Device Management to deploy the installation and configuration files to your devices. This method is recommended if you need to deploy Sophos Mobile Security to a large number of devices (for example, 10 or more).

### Deploy Sophos Mobile Security using other methods

If you plan to have users install Sophos Mobile Security on their devices themselves, you can distribute the installation and configuration files by email, by download from a website, on CD, or from a central server.

We recommend that you supply your users with the following files:

- Deployment Tool

The default location of this file on your computer is *drive*\Program Files\Sophos\Sophos Mobile Security\Client\Sophos Mobile Security Deployment Tool.msi.

- Configuration file

The default location of this file on your computer is *drive*\Program Files\Sophos\Sophos Mobile Security\MobileSecurity.cfg.

- *Sophos Mobile Security startup guide*

Direct your users to section 2, "Installing Sophos Mobile Security".

## Technical support

For technical support, visit [www.sophos.com/support](http://www.sophos.com/support).

If you contact technical support, provide as much information as possible, including the following:

- Sophos software version number(s)
- Operating system(s) and patch level(s)
- The device on which the problem was found
- The exact text of any error messages

Copyright © 2007 Sophos Group. All rights reserved. No part of this publication may be reproduced, stored in a retrieval system, or transmitted, in any form or by any means, electronic, mechanical, photocopying, recording or otherwise unless you are either a valid licensee where the documentation can be reproduced in accordance with the licence terms or you otherwise have the prior permission in writing of the copyright owner.

Sophos and Sophos Anti-Virus are registered trademarks of Sophos plc and Sophos Group. All other product and company names mentioned are trademarks or registered trademarks of their respective owners.